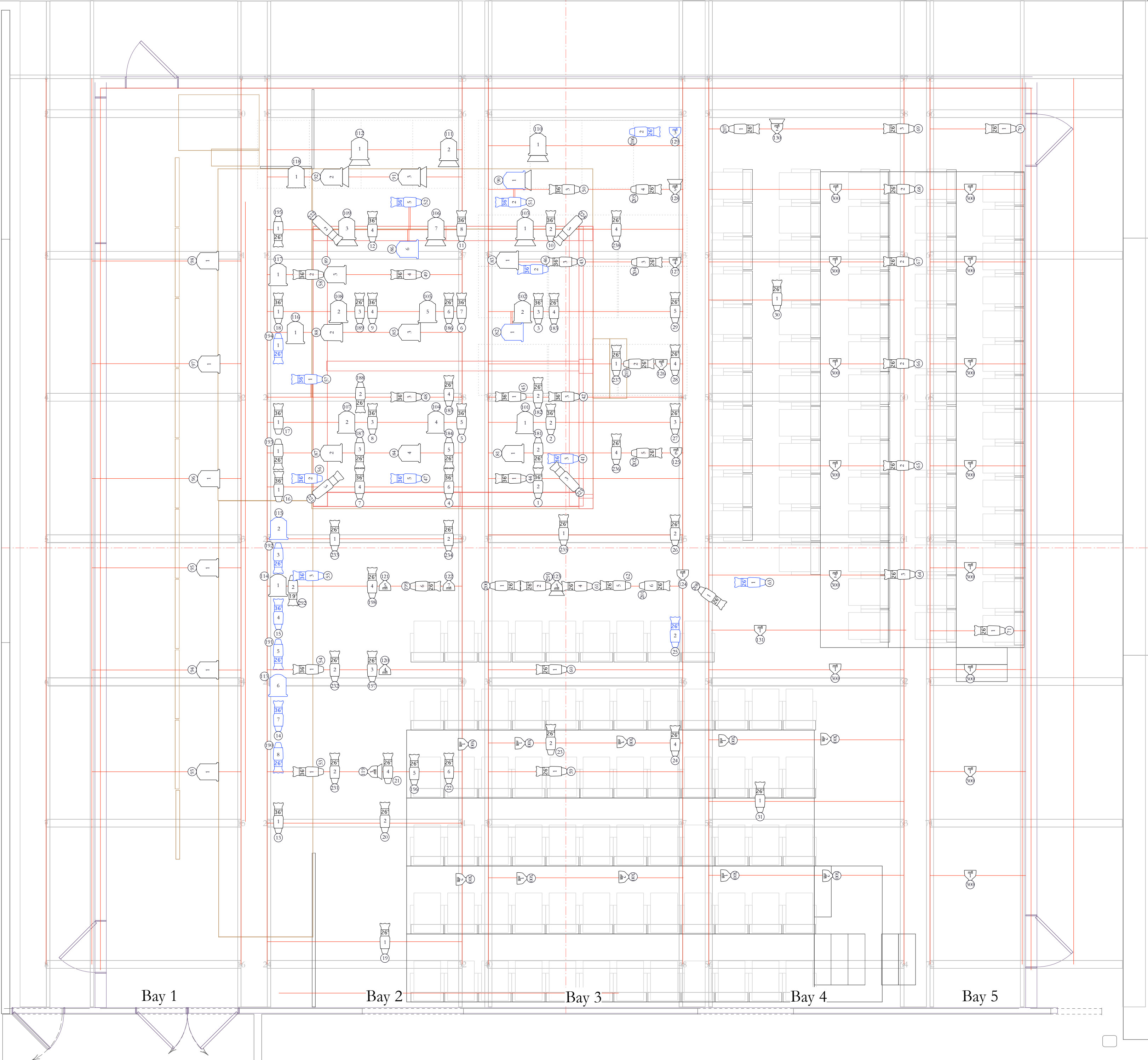


A

A

B

B



- Notes
- 1) E-W Pipes in BAY 1 may run from EAST HANDRAIL to PIPE B.
  - 2) All fixtures in blue are either yoked 90° or need side arms. Side arms are delineated by (2) red parallel lines at fixture.
  - 3) This drawing represents visual concepts and construction suggestions only. The designer does not assume responsibility for structural integrity or safety of any scenery /lighting used in rehearsal or performance. All materials and construction methods must conform to the strictest applicable fire codes.

Key			

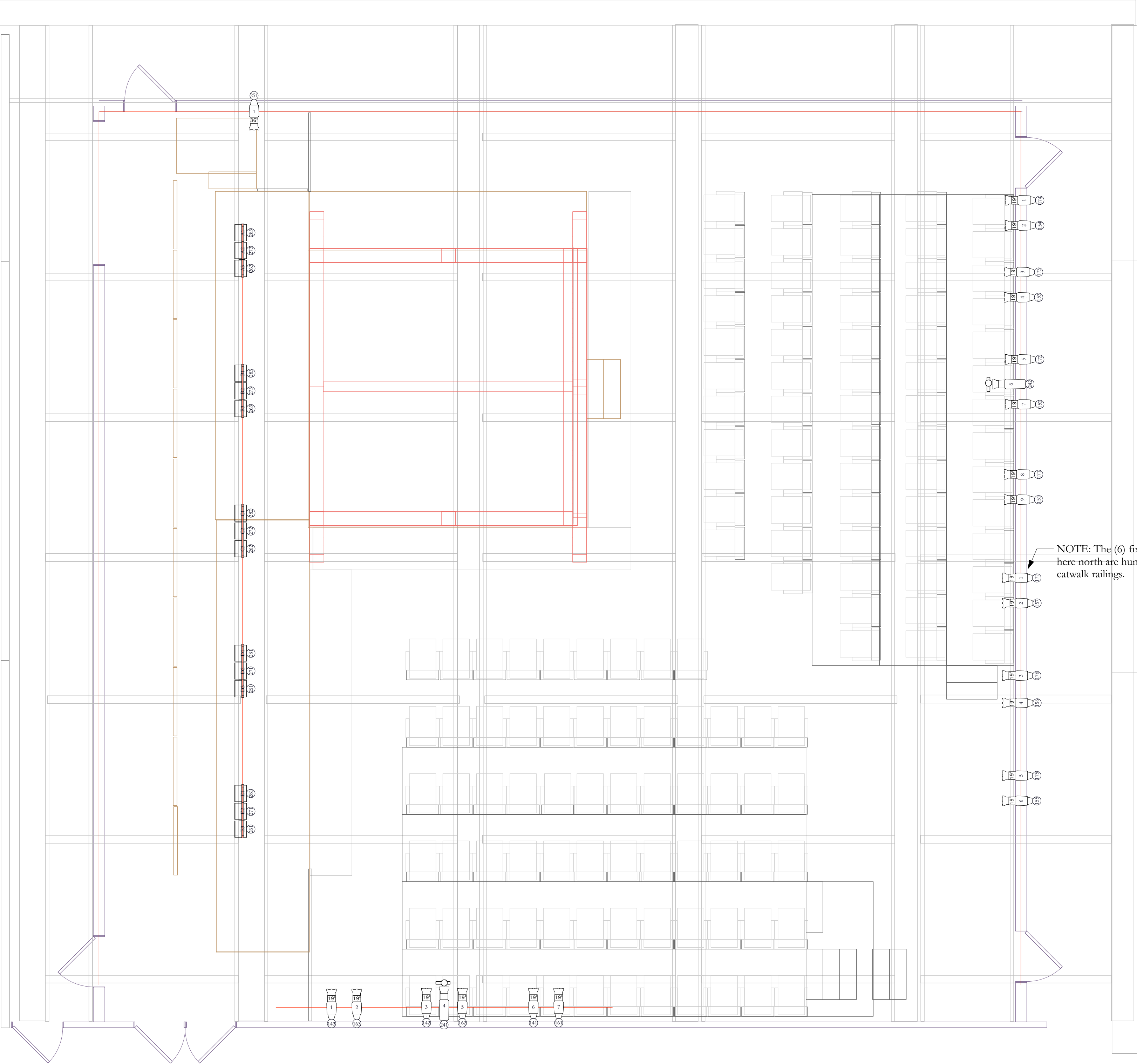
Production Title		hagoromo & the weaver and the dress	
Drawing Title		LIGHT PLOT	
Designer	rachel kinsman steck	Director	jubilith moore
Drawn By	rks	Scale	1/4" = 1'-0"
Venue	willamette university theatre	Sht-3 _____ of _____ 7	
Date	4/11/2016		
CAD File Name	Noh-S2016		

A

A

B

B

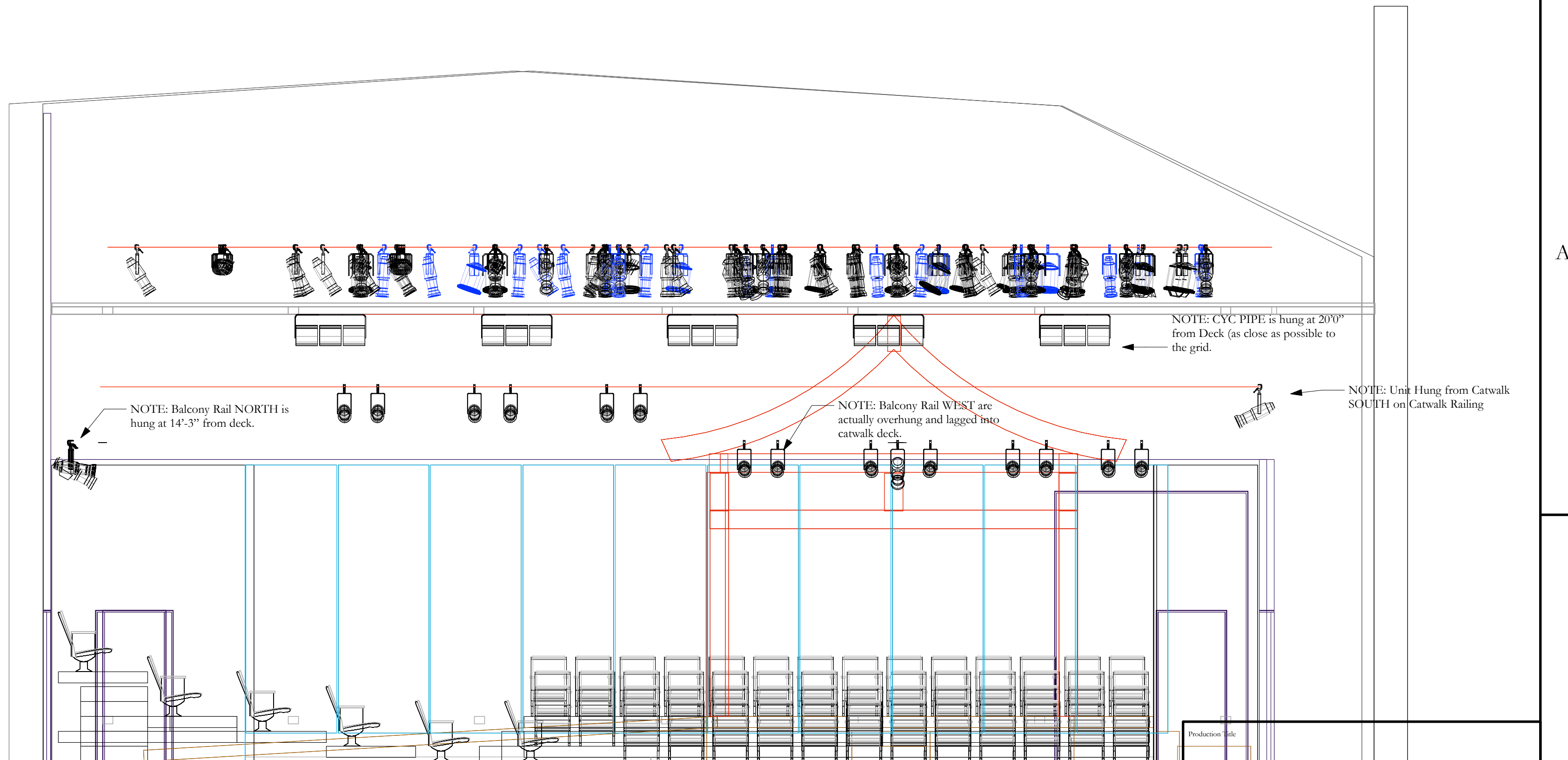


- Notes
- 1) Balcony Rail North Pipe is hung at 14'3"
  - 2) Balcony Rail West fixtures are lagged into the Catwalk Deck as close to the edge as possible
  - 3) Please remove the Catwalk Railings as necessary to accomodate the fixtures. ADD safety rope at 42" above the deck to ensure safety.
  - 4) Altman Q Lights will be rigged into "fire pots" at the height of 18"-24". Please check with both lighting and scenic designer prior to installation.
  - 5) The LEDs used below the tension grid are both Luster+ fixtures. They will also have the Roscoe ICues attached.
  - 6) This drawing represents visual concepts and construction suggestions only. The designer does not assume responsibility for structural integrity or safety of any scenery /lighting used in rehearsal or performance. All materials and construction methods must conform to the strictest applicable fire codes.

Key			
	Source 4 26deg		
	Source 4 36deg		
	Source 4 19deg		
	Source 4 50deg LED		

Production Title		hagoromo & the weaver and the dress	
Drawing Title		LIGHT PLOT (below the tension grid)	
Designer	rachel kinsman steck	Director	jubilith moore
Drawn By	rks	Scale	1/4" = 1'-0"
Venue	willamette university theatre	Sht-4 _____ of _____ 7	
Date	4/11/2016		
CAD File Name	Noh-S2016		

A



A

B

B

Production Title	
hagoromo & the weaver and the dress	
Drawing Title	
WEST ELEVATION	
Designer	Director
rachel kinsman steck	jubilith moore
Drawn By	Scale
rks	1/4" = 1'-0"
Venue	Drawing No.
willamette university theatre	
Date	
4/11/2016	1b
CAD File Name	of
Noh-S2016	7